



## **USB-C™ 3.1 Gen 2 Multiport Hub**

**Model 201063**

## **USB-A 3.1 Gen 2 Multiport Hub**

**Model 202063**

**with**

**USB, UHS-II SD Card Reader & SATA 3.0**



Check for troubleshooting & Thunderbolt 3 driver information at:

**[kb.cablematters.com](http://kb.cablematters.com)**

**User Manual**

**[support@cablematters.com](mailto:support@cablematters.com)**

## Customer Support & Contact Information

Thank you for your purchase from Cable Matters® Inc., *The Reliable Connectivity* Company. This User Manual provides an overview of the features and installation of your new:

Model 201063: [USB-C™ 3.1 Gen 2 Multiport Hub](#)

Model 202063: [USB-A Multiport Hub](#)

Please read these instructions carefully before connecting, operating or configuring this product. Please keep this manual for future reference.

## Customer Support & Contact Information

Cable Matters offers lifetime technical support as an integral part of our commitment to provide industry leading solutions.

Contact us with any questions at [support@cablematters.com](mailto:support@cablematters.com).

## Copyright & Trademarks

Cable Matters is a registered trademark or trademark of Cable Matters Inc. All rights reserved. All other trademarks are the property of their respective owners.

Thunderbolt and the Thunderbolt Logo are trademarks of Intel Corporation in the U.S. and/or other countries.

USB Type-C™ and USB-C™ are trademarks of USB Implementers Forum

## Package Contents

Please check that the following items are contained in the package:

- 1x USB-C Gen 2 Multiport Hub (Model 201063)
- 1x USB-A Gen 2 Multiport Hub (Model 202063)
- 1x AC Power Adapter
- 1x User Manual (available as a PDF)

## Product Description

The Cable Matters® USB-C 3.1 Gen 2 Multiport Hub supports multiple formats to transfer and back-up files from your computer with USB-A or USB-C/Thunderbolt 3. Connect an external hard drive or flash drive with USB-A or USB-C, transfer files from a microSD or SD card and back-up important data to a high-capacity SATA hard drive. Transfer files twice as fast with support for USB 3.1 Gen 2 10Gbps and a UHS-II SD card reader.

## Product Features

- Maximize the data transfer rate of a USB-A or USB-C 3.1 Gen 2 10Gbps port (backwards compatible to USB-A Gen 1 at a slower transfer rate)
- Add USB-A and USB-C ports, 2x SD card readers and a SATA HDD outlet over a single USB-A or USB-C 10Gbps Gen 2 port
- USB-A port provides 5V/1.5A charging (with AC power) and is compatible with USB 2.0, 3.0, 3.1 Gen1 and 3.1 Gen 2 devices
- USB-C downstream port connects a smartphone with USB-C to sync files and charge up to 5V/1.5A (with AC power)
- UHS-II SD memory card reader offers 2x the data transfer speed with backwards compatibility to UHS-I
- Simultaneous Read/Write to both the SD and microSD card reader slots
- Back-up files to an external 2.5" or 3.5" SATA SSD or HDD to free-up storage on your computer
- Read files from an optical DVD or CD drive with SATA

## System Requirements

✓ **Host 201053:** USB-C/Thunderbolt 3 computer port (OS independent)

✓ **Host 202053:** USB-A computer port (OS independent)

✓ **USB-A 3.1 Port:** USB cable or device

✓ **USB-C 3.1 Port:** USB-C cable or device

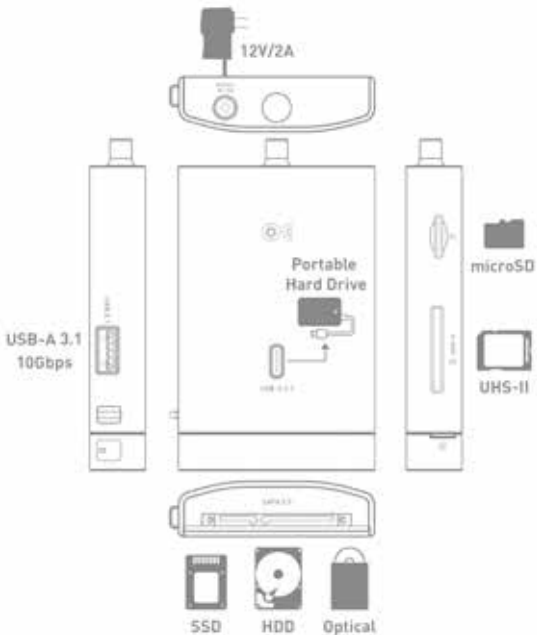
✓ **UHS-II SD Card Reader:** SD/SDHC/SDXC, UHS-I or UHS-II

✓ **microSD Card Reader:** microSD/SDHC/SDXC UHS-I

✓ **SATA HDD Drive Connector:** 2.5" or 3.5" SATA SSD or HDD

Notes: All cables to connect devices to the Hub are sold separately

File transfer speed is limited by the connected cable or device



## Connecting the Multitport Hub to the Host

- 1) Directly connect the Hub to a USB-C/Thunderbolt 3 or USB-A port of the computer
- 2) Connect the AC power adapter BEFORE connecting any devices to the Hub (AC power is optional)
- 3) Check that the blue LED on the top of the Hub is lit

### Notes:

- The AC power is optional. It may be required with external hard drives.
- **DO NOT** disconnect the AC power while transferring files
- A PC with Thunderbolt 3 may need to update Thunderbolt 3 drivers (For more information go to [kb.cablematters.com](http://kb.cablematters.com))

## USB-C Downstream Port

- 1) Connect a USB-C peripheral device (sold separately)
- 2) Wait while any needed device drivers are downloaded
- 3) Transfer files to an external hard drive



USB-C 3.1

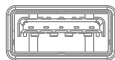
### Notes:

- Connect the AC power before transferring files, if needed
- USB-C port is limited to 5V/1.5A charging (with AC power)
- Not compatible with USB-C video adapters or Thunderbolt 3 devices
- Data transfer speed up to USB 3.1 Gen 2 (10Gbps)

## USB-A Downstream Port

- 1) Connect a USB-A peripheral device (cables sold separately)
- 2) Wait while any needed device drivers are downloaded
- 3) Use **Safely Remove** or **Eject** to remove data devices before unplugging

USB 3.1



### Notes:

- Connect the AC power before transferring files, if needed
- AC power may be required for the Hub to recognize an external hard drive
- USB-A port is limited to 5V/1.5A charging (with AC power)
- Data transfer speed up to 10Gbps is limited by the connected USB cable and device

## Connecting an SD Memory Card



UHS-II



- 1) Insert an SD card into the microSD or SD card reader port
- 2) SD card should be recognized after downloading any needed drivers
- 3) Always **Safely Remove** or **Eject** the SD card before removing

### Notes:

- Read/Write to an SD card in each slot simultaneously
- Connect the AC power before transferring files, if needed
- microSD cards can be used in the SD port with an adapter
- SD slot supports UHS I and UHS II / microSD slots supports UHS-I
- **Do NOT** unplug the AC power while transferring data
- Data transfer speed is limited by the UHS and SD card class rating

## Connecting a SATA Device

SATA 3.0



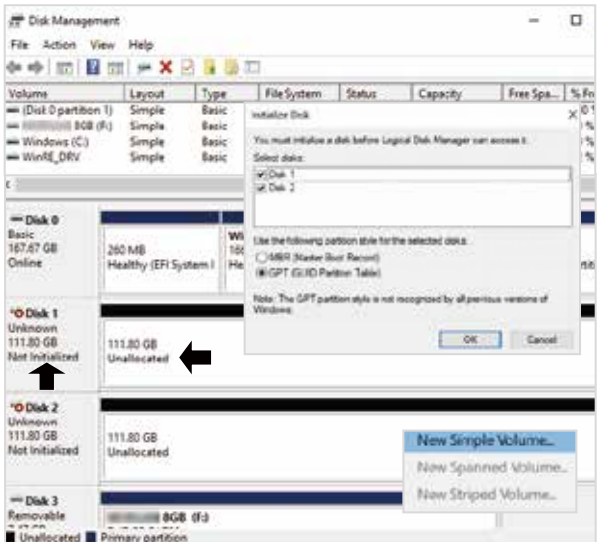
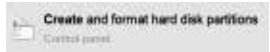
- 1) Connect the AC power
- 2) Connect a 2.5" or 3.5" SSD/HDD or an optical drive
- 3) Always **Safely Remove** or **Eject** the drive before removing

### Notes:

- **DO NOT** connect any storage devices while using an optical drive
- Handle a SATA SSD/HDD drive carefully to avoid damage
- Place the Hub on a flat, stable surface before transferring data
- A new SSD/HDD must be initialized before the drive is recognized
- Check that the drive is properly seated with a connection to all the pins
- Data transfer may be disrupted by the sleep mode of the computer

# Initializing & Formatting a SATA drive in Windows

- 1) Connect the AC power and the SATA drive. Check that the Hub LED is lit.
- 2) Search for **Create and format**  
**hard disk partitions**
- 3) Open the **Disk Management** utility
- 4) Click **OK** in the **Initialize Disk** menu to initialize the SSD (Right-click to open the menu, if needed)
- 5) Right-click on the **Unallocated** Disk to open and select the **New Simple Volume**
- 6) Follow the wizard instructions. Most drives can use the default settings.



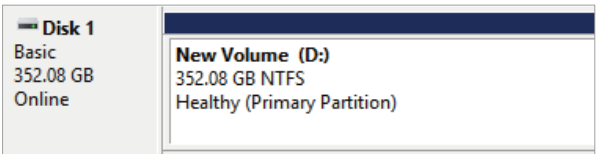
# Windows Simple Volume Wizard

Use the **Simple Volume Wizard** to perform the following functions:

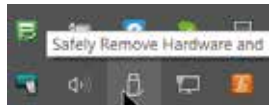
- Partition a drive
- Change the drive letter
- Delete a partition
- Format a drive
- Shrink a partition
- Change a drive file system type



- Use the default menu choices when uncertain
- Select the **exFAT** file system to share the drive with a Mac computer
- A notification window will list the successful operations. Click **Finish**.
- The disk should now appear as **Healthy** in the **Disk Management** menu

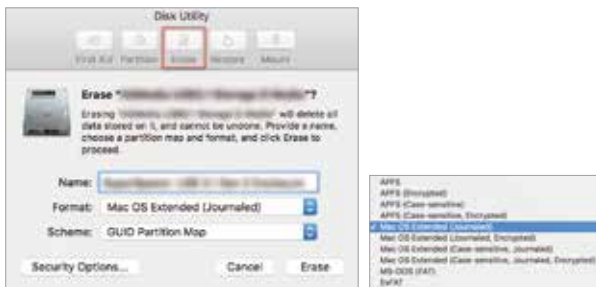
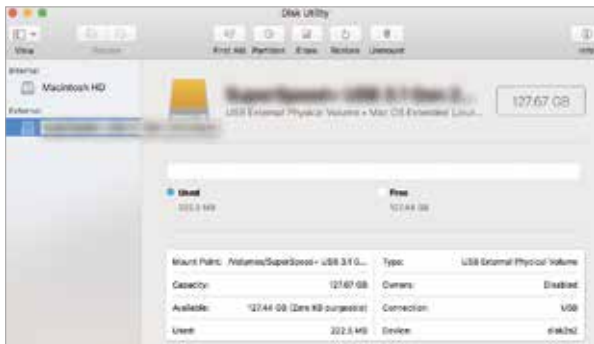


- Open **File Explorer** to access the Enclosure and transfer files
- Use the **Safely Remove Hardware** icon from the taskbar or the notification area before removing the Enclosure to prevent damage to the drives





# Initializing & Formatting a SATA drive in macOS



- 1) Connect the Hub to AC power and to your computer
- 2) Check that the LED on the Hub is lit
- 3) Select **Initialize**, when prompted (or open **Finder > Utilities > Disk Utility**)



- 4) Click **Erase** and provide a **Name**, **File Format**, and partition **Scheme**  
(Select exFAT file format to share with a Windows computer)
- 5) Click the **Eject** button on the menu before removing the drive

## Troubleshooting Tips

- Unplug the Hub, reboot the computer and then reconnect
- Check that the USB-A/USB-C host port supports USB 3.1 Gen 2 10Gbps
- Check that the LED on the Hub is lit
- If any device is not recognized without the AC power, unplug the device, connect the AC power, and re-connect the Hub and device
- Host charging is not supported, power your computer with a different method
- A 2.4 GHz wireless/mouse may cause interference over the USB-A 3.1 port, connect a USB 2.0 extension cable
- Test the connected cables, USB device, SD memory card or SATA device with a different computer
- Check with the PC manufacturer for updated Thunderbolt 3 drivers
- For more troubleshooting information go to: [kb.cablematters.com](https://kb.cablematters.com)

### Windows OS:

- Check to see if your computer recognizes the Hub: Device Manager > Disk drives > SATA 3 drive or SD memory card name

### macOS

- Check to see if your computer recognizes the Hub: About this Mac > System Report > Hardware > USB 3.1 Bus > 4-Port USB 3.0 Hub

Contact [support@cablematters.com](mailto:support@cablematters.com) for a warranty replacement if you believe that the Hub is defective.

## Technical Specifications

Host Connector (Model 201063).....	USB-C 3.1 Gen 2 Cable
Host Connector (Model 202063).....	USB-A 3.1 Gen 2 Cable
USB-A 3.1 Port.....	Gen 2 10Gbps
USB-C 3.1 Port.....	Gen 2 10Gbps
SD Card Reader Port.....	Supports SDHC/SDXC/UHS-I/UHS-II
microSD Card Reader Port.....	Supports SDHC/SDXC/UHS-I
SATA HDD Drive Connector.....	(7+15) Power & Data Receptacle
Hub Housing (LxWxH).....	3.5 x 2.3 x 0.6 Inches
Cable Tail Length.....	6 Inches
OS Support.....	OS Independent
Warranty.....	Limited One-Year

Note: Specifications are subject to change without notice.

## Warranty Information

This product is backed by a limited one-year warranty. The warranty covers parts and labor costs only. Cable Matters does not warrant its products from defects or damages arising from misuse, abuse, or normal wear.

## Limitation of Liability

In no event shall Cable Matters Inc. (including their officers, directors, employees or agents) be liable for any damages (whether direct or indirect, special, punitive, incidental, consequential, or otherwise), loss of profits, loss of data, loss of business, or any pecuniary loss, arising out of, or related to the use of this product exceeding the actual price paid for the product (as allowed by state law).

## FCC Compliance Statement

This device complies with Part 15 of the FCC Rules. Operation is subject to the following two conditions: 1) This device must not cause harmful interference, and 2) this device must accept any interference received, including interference that may cause undesired operation.

View other USB-C™ products at [www.cablematters.com](http://www.cablematters.com)

**Model 201020**

USB-C 3-Port Hub with Ethernet



**Model 201042**

72W 4-Port USB-Charger



**Model 201046**

USB-C to DisplayPort Multiport Adapter with 60W PD



**Model 201058**

USB-C SD Card Reader

